

DIY fix for the Mode Dial problem - Olympus C-5060 Wide Zoom

Fix for the Mode Dial Problem

Introduction

For more than two years I was able to take a few thousand images with my C-5060WZ. I was always happy how good the camera was working.

Then I discovered some problems with the display. Some menus just appeared on the display without pressing any buttons. I wasn't able to get some functions of the display without switching the camera off. Sometimes I could force the fault while I was knocking on the Mode Dial.

I did some research in the www and found a lot of people with the same problem. Further investigations showed that the problem might be factory made. However, out of warranty it's just too expensive to get that problem fixed.

I finally found a report of Steven Newcomb who had exactly the same problem with his C-5050Z. He was able to fix it by himself.

Based on his experience I started to fix my camera and report it step by step to support people with the same camera problem.

This documentation shows the result of my endeavours.

Notice: I'm not a native English speaker.
I do apologise for mistakes in this documentation and beg for indulgence.
Please report mistakes to spindizzy@gmx.net
Thanks!

Important!
**Read this manual at least once before you start to
disassemble your camera.**

Preperation

The part itself, the Mode Dial can be ordered at the Olympus Service department or an Olympus dealer.



I've paid. NZ\$ 40,- for it
(H.E. Perry Ltd / Christchurch
08/2006)

If you experience some
problems getting the part, let
me now, I'm sure we can
arrange something.

The part number is:
VC799700

Tools: Phillips screw driver size 0
 Small slotted screwdriver
 tweezers



The screws are mostly different sizes, so make sure that all screws find the way back in the right holes!
Make notes and think about the force you use handling these tiny screws. You are not working with wheel nuts!

Disassembling

Release battery

Don't loose screws which are not marked. You won't have any parts rattling around in your camera.

Put the camera on top and loosen the two screws at the bottom.





Put the camera on the right side and lift the rubber lid. You'll find another two screws there.



Put the camera on the left side and unscrew the two screws underneath the lid for the memory module.

The lid will come off as soon the back part of the camera is loosened. Make sure you don't lose the small shaft.





The flash cover is a little bit tricky. You have to lift up the front and then slide it out backwards. Don't use brute force!



You'll find another screw's. Unscrew the marked screws.



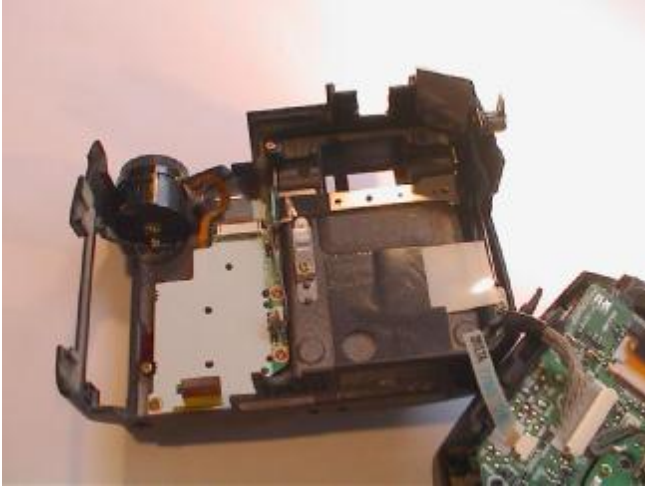
Now you are able to dismantle the back of the camera, be careful!

WARNING!!

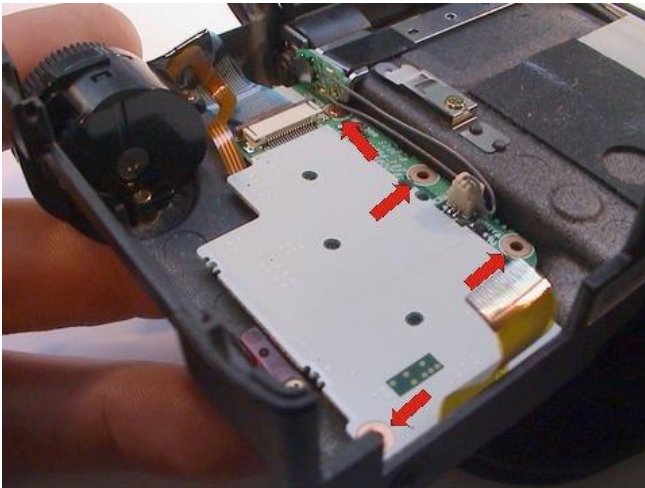
You'll find a ribbon cable at the bottom of the camera which is quite short. Don't give it to much stress; lift it straight up with a screwdriver, be VERY carefully. (Picture below)

You are able to release the back yet. Look out! There are still two ribbon cables connected to the back of the camera. Make sure that you do not pull too much.





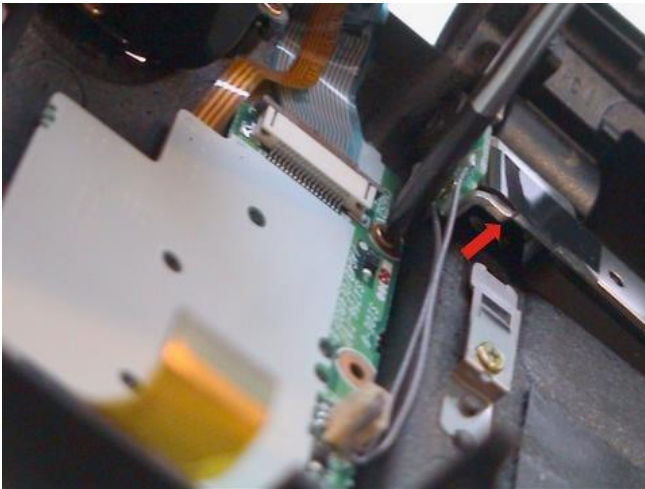
At the left top you can see the Mode Dial now. Before you're going on, you need to release the two ribbon cables. To do so you have to unscrew the board for the buttons.



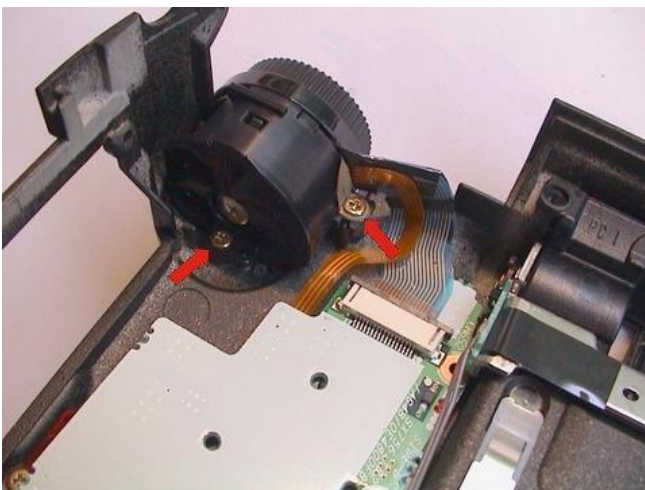
Four screws are necessary. Three are quite easy to loosen but one is hidden underneath another small board.



You have to detach the display carrier. Lift the display and unscrew the marked screws.

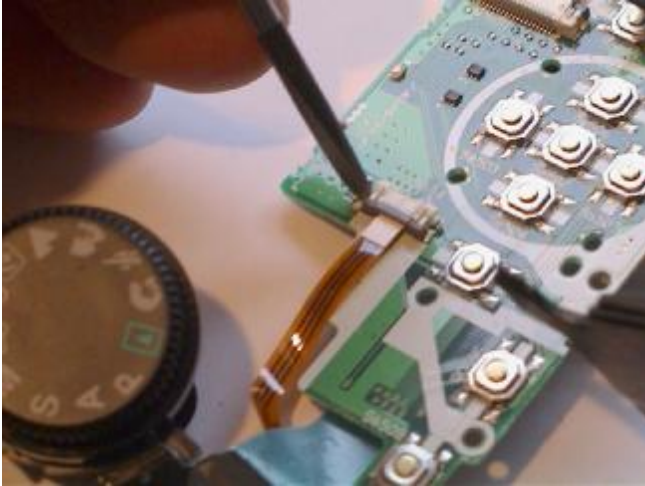


Now you can lift the display carrier enough to release the last screw.



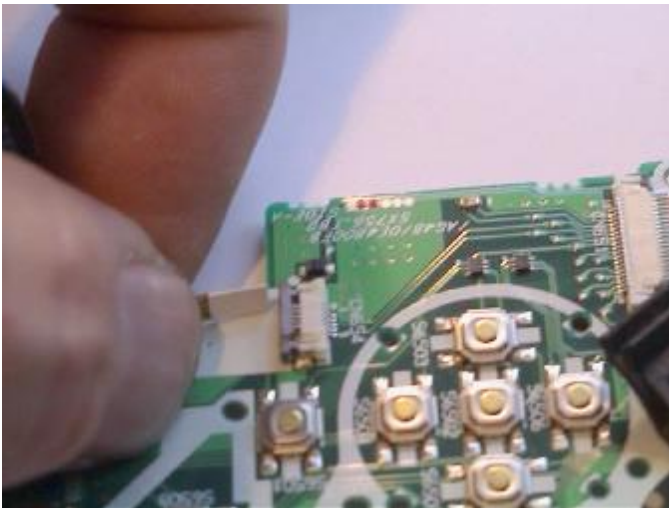
Finally you can release the last two screws to get the mode Dial out.



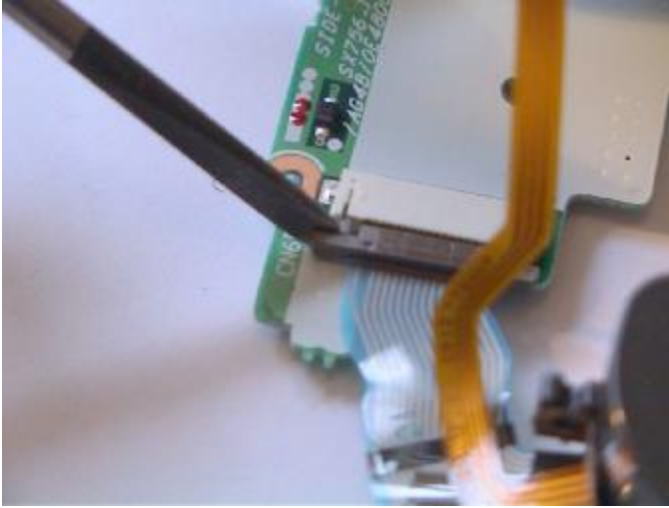


There are still the two ribbon cables attached to the Mode Dial. Use your screwdriver to unfasten the clips.

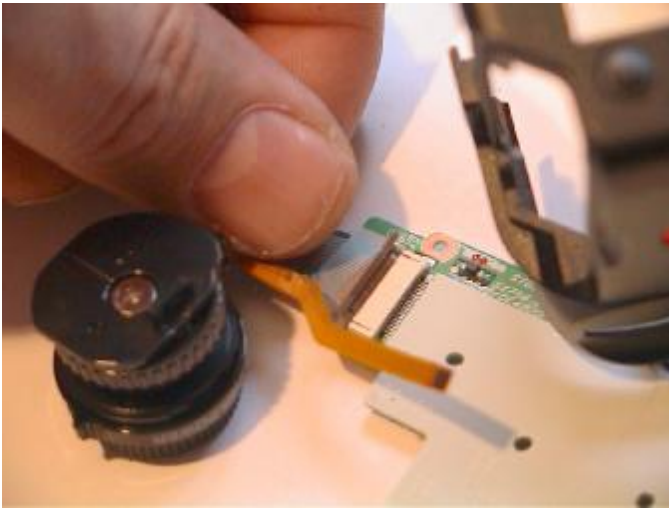
These parts are quite sensitive, be careful.



After the cable is unfastened you easily can release it.



Do the same with the second ribbon cable.



That's it! Good job!
Wasn't too hard, wasn't it?



Replace the Mode Dial and start to assemble the camera. Basically everything works in the same way, just in reverse order **J**
The only tricky part is to get the bottom ribbon cable back into its connector.



I've used the tweezers to place the ribbon cable exactly on top of the connector. Then I've pressed the cable slightly in the right position.

You'll need properly more than one try, just make sure you don't use too much force!

Testing

Put the battery back in and check how everything works.



Epilogue

It took me a little bit more than an hour to fix the Mode Dial problem. The whole time I tried to work concentrated and accurate. At the end I had success. Its now end of 2007 and the camera is still working fine. J

At the same time I did a firmware upgrade to version V756-84 (Stand 8/2006). The upgrade is promising a lower noise level and a few other features which are described on the Olympus Website.

You can download the upgrade here:

http://www.olympus-europa.com/consumer/firmware_fl.htm

You'll find there a manual how to do the upgrade as well.

At the end I only can say it was worth it and I don't assume any kind of warranty. Good luck J

!!!! WARNING !!!!

Like always with such manoeuvres you are alone responsible for your actions!

With opening of the camera you will lose any existing factory warranty. If your camera is still under warranty I recommend sending it to an Olympus service dealer.

Olympus is registered trademark